

# Bobcat™ 265 Air Pak™

Gas Engine-Driven Welder 

## Quick Specs

### Industrial Applications

Fabrication  
Maintenance  
Repair  
Structural steel work  
Sheet metal  
Pipe

### Processes

Stick (SMAW)  
MIG (GMAW)\*  
Flux-cored (FCAW)\*  
DC TIG (GTAW)  
Air carbon arc (CAC-A)  
cutting and gouging (3/16 in. carbons)  
Air plasma cutting and gouging  
with optional Spectrum® models

\*With wire feeder.

**Output Range** DC stick 20–265 A  
MIG/flux-cored 14–30 V  
DC TIG 20–265 A

**Auxiliary Power Output Rated at 104°F (40°C)**  
11,000 watts peak, 9,500 watts continuous

**Air Compressor** 30 cfm, 100% duty cycle, 80–160 psi

### Battery Charge/Crank Assist

**Battery charge** 12/24 V, 150 A  
**Crank assist** 12/24 V, 300 A

**Powerful all-in-one tool designed for repair and construction with multiprocess weld quality, auxiliary power, air compressor and battery charge/crank assist.**

The most popular engine-driven welder in the industry, the Bobcat is:

- Quiet to operate
- Small and light
- Easy to maintain



### Easy to use

Digital interface speeds machine setup and makes it less complicated.



### Separate weld and auxiliary power

Full auxiliary power at any setting.



**Exceptional arc performance**  
Easy arc starts and less spatter.



**Easier mobility and uses less truck space and payload**



### Easy maintenance

With its intuitive design, the daily maintenance of our Bobcat engine-driven welder is fast and easy.



**Rotary screw compressor**  
Quiet and durable compressor delivers 30 cfm at 80–160 psi of air at 100% duty cycle.



Engine-driven welder/air compressor/battery charger is warrantied for three years, parts and labor. Engine is warrantied separately by the engine manufacturer.



**Miller Electric Mfg. LLC**  
An ITW Welding Company  
1635 West Spencer Street  
P.O. Box 1079  
Appleton, WI 54912-1079 USA

**Equipment Sales US and Canada**  
Phone: 866-931-9730  
FAX: 800-637-2315  
International Phone: 920-735-4554  
International FAX: 920-735-4125

**MillerWelds.com**  




# The Bobcat™ Advantage

## Battery charge/crank assist

**Reduce downtime with battery charge/crank assist capability.** Designed and recommended for mechanics or anyone else responsible for a fleet of trucks or equipment. By using your Bobcat to charge dead batteries or jump a stubborn engine, you'll keep your crew working and the fleet up and running.

*Note: Battery charge/jump cables (300422) must be ordered separately.*



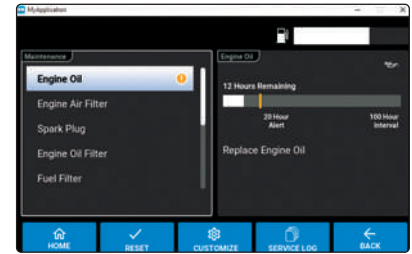
## Auto-Set™ technology

Auto-Set offers predefined weld settings to increase ease of use and ensure that the job is done right for operators of all skill levels.



## Data visibility

Predictive maintenance information helps you plan necessary service time. Productivity screens make it easier for you to monitor machine use.



## Industrial rotary-screw air compressor

Runs most air impact wrenches at idle and gives 100 percent deliverable air. Produces 30 cfm of air at 100 percent duty cycle and delivers 80–160 psi of air with no storage tank. Provides four convenient air compressor access points. The air outlet connection requires a 1/2-inch NPT swivel fitting. Compressor is warranted by Miller for three years.



## Direct spool gun connection

Make it easy to weld aluminum. Expand the types of jobs you can take on. Adapters are no longer required with the integrated 10-pin connection. Optimized for Spoolmate™ and Spoolmatic® spool guns.



# The Bobcat™ Advantage

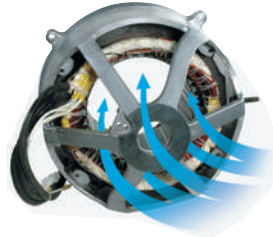
## Long runtimes

Large 11-gallon fuel capacity means many hours of run time before refueling. Improved fuel system design reduces a no-start condition if overfilled.

## Designed for reliability

From Appleton, Wisconsin USA, our engine-driven welders are the most rugged, durable and long-lasting in the industry. We manufacture them to exceed requirements for extreme working conditions and they are hard-working from the core with:

- Copper windings and robust internal components for a quality-built machine
- Lugged — not soldered — heavy internal leads for better field durability
- Superior cooling technology for maximum performance and engine life
- Protective doors to cover the weld studs and receptacles as required by OSHA and CSA for jobsite safety
- Lift hook integrated into the center frame, which bolts to the machine's base for greater durability



## Typical equipment power usage

Bobcat engine-driven welders will easily start and run the following:

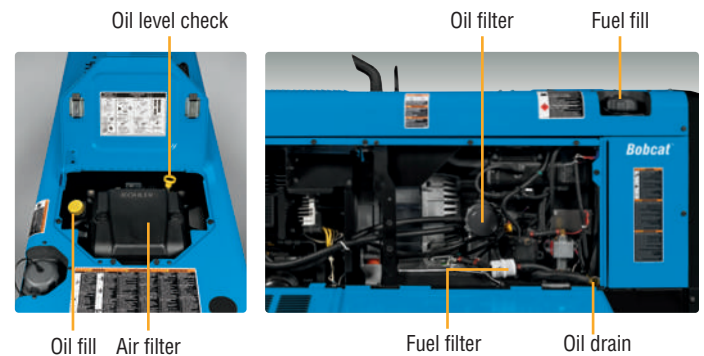
Equipment	Starting Watts	Running Watts
Barn Cleaner (5 hp)	11,600	3,000
Silo Unloader (5 hp)	12,200	4,300
Portable Conveyor (1/2 hp)	3,400	1,000
Milker (5 hp)	10,500	2,800
Hand Drill (1/2 inch)	600	600
Circular Saw (8-1/4 inch)	1,400	1,400
Air Compressor (1-1/2 hp)	8,200	2,200
Flood Lights (Vapor)	1,250	1,000
Spectrum® 625 X-TREME™ (30 A, 230 V, 1/2-inch cut)	6,900	6,900

To size a unit that has enough power output in watts, add the watts for the items you want to simultaneously run. Tools with induction motors may require three to seven times the listed wattage when starting. **All data listed is approximate — check your tool for specific wattage requirements.**

## Easy maintenance

With its intuitive design, the daily maintenance of our Bobcat engine-driven welders is fast and easy. Front panel maintenance displays help you know when your equipment needs to be serviced. And servicing is simple because of:

- Oil checks that can be performed easily through the top of the machine by the access door
- Toolless panels that allow for quick access
- Single-side fuel fill and oil drain/filter



## Reversed air flow for optimized cooling

Exclusive engine and interior componentry design operates cooler and more efficiently. The engine is rotated towards the front to create more efficient airflow. More efficient airflow and exclusive engine location are significant contributors to reduced sound level and size reduction. Hot air recirculation is eliminated when machine is mounted in tight spots, and internal parts are kept cool for optimal performance.



## Specifications (Subject to change without notice.)



Welding Mode	Process	Amp/Volt Ranges	Rated Weld Output at 104°F (40°C)*	Single-Phase Auxiliary Power	Sound Levels at 7 m (23 ft.)	Dimensions	Net Weight**
CC/DC	Stick/TIG	20–265 A	244 A at 29.8 V, 100% duty cycle	<b>Peak</b> 11,000 watts	<b>Weld</b> 150 A load: 69.5 dB (94.7 Lwa) 265 A load: 75.3 dB (100.6 Lwa)	H: 27 in. (686 mm) H: 31 in. (787 mm) (to top of exhaust) W: 20.46 in. (520 mm) D: 51.88 in. (1,318 mm)	570 lb. (258.5 kg)
CV/DC	MIG/FGAW	14–30 V	260 A at 27 V, 100% duty cycle				
Battery charge/ crank assist		12/24 V	Charge: 150 A Crank assist: 300 A				

\*Rated at sea level. \*\*Net weight without fuel.



Certified by Canadian Standards Association to both the Canadian and U.S. Standards.

## Air Compressor Specifications

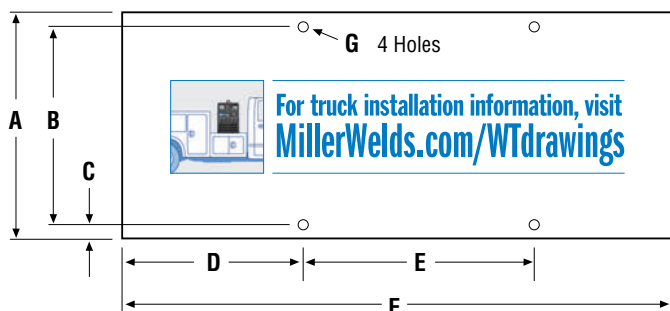
Compressor Brand and Warranty	Features	Free Air Delivery	Working Pressure Constant	Duty Cycle	Oil Capacity	Automatic Compressor Shutdowns
Rotorcomp, 3-year warranty	Rotary screw with electric clutch for on/off, oil change intervals 500 hours	30 cfm (0.85 m <sup>3</sup> /min.) at 3,600 rpm 28 cfm (0.79 m <sup>3</sup> /min.) at 3,000 rpm	80–160 psig	100%	1.75 qt. (1.7 L)	High pressure (160 psi)

## Engine Specifications (Engines warranted separately by the engine manufacturer.)

Engine Brand and Warranty	Horsepower (HP)	Type	Weld Speed	Idle Speed	Fuel Capacity	Oil Capacity	Standard Shutdowns
Kohler CH749, 3-year warranty	27 hp at 3,600 rpm	Twin-cylinder, four-cycle overhead valve, air-cooled industrial gasoline* engine	3,600 rpm	2,400 rpm	11 gal. (41.6 L)	1.75 qt. (1.7 L)	Low oil pressure

\*Fuel stabilizer is recommended for gas engines that are used infrequently.

## Mounting Specifications



Front Panel

- A. 20.46 in. (520 mm)
- B. 16.5 in. (419 mm)
- C. 1.72 in. (44 mm)
- D. 16.16 in. (410 mm)
- E. 24 in. (610 mm)
- F. 51.88 in. (1,318 mm)
- G. .406 in. (10.3 mm) diameter

### Small, light design

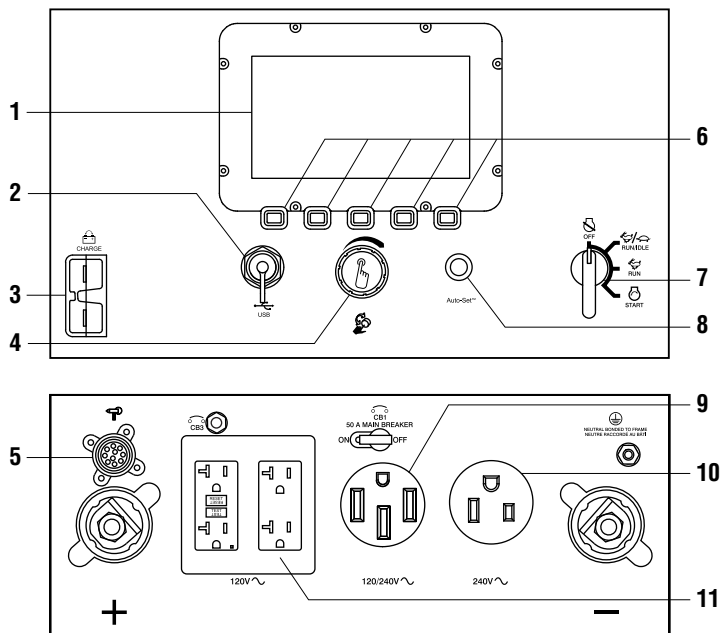
Bobcat engine-driven welders take up less space on trucks and trailers — leaving more room on your truck for other equipment and tools. Plus, they're easier to move around jobsites — even with weld cables attached.



# Choose the Right Bobcat™ Air Pak™ or Trailblazer® Air Pak™ Engine Drive

Fuel System	Bobcat 200 Air Pak	UPGRADE	Bobcat 265 Air Pak	UPGRADE	Trailblazer 330 Air Pak
Fuel Type	Gasoline		Gasoline		Gasoline
Weld					
Output	DC only, CC/CV		DC only, CC/CV		DC only, CC/CV
Processes	Stick / MIG / FCAW	➔	Stick / TIG / MIG / FCAW / Gouge		Stick / TIG / MIG / FCAW / Gouge
Amperage Range	20–230 A	➔	20–265 A	➔	20–330 A
Voltage Range	14–25 V	➔	14–30 V	➔	15–40 V
Auxiliary Power					
Peak Watts	8,000 watts	➔	11,000 watts	➔	12,000 watts
Continuous Watts	6,500 watts	➔	9,500 watts	➔	10,500 watts
Dimensions					
Size (H x W x D)	24.25 x 20 x 44.61 in.		27 x 20.46 x 51.88 in.		27 x 20.46 x 51.88 in.
Weight	514 lb.		570 lb.		587 lb.
Key Features					
Display	Segmented digital	➔	LCD		LCD
Maintenance	Fuel / hour / oil	➔	Predictive maintenance		Predictive maintenance
Auto-Set™	—	➔	Yes		Yes
Battery Charge / Crank Assist	100 A charge / 300 A crank	➔	150 A charge / 300 A crank	➔	150 A charge / 300 A crank
ArcReach®	—		—	➔	Yes (standard)
Spool Gun	Direct connect		Direct connect		Direct connect
Remote Start/Stop	—		—	➔	Wireless interface control (option)
Compressor					
Type	Rotary screw		Rotary screw		Rotary screw
Air Rating	30 cfm at 175 psi		30 cfm at 160 psi		30 cfm at 160 psi
Working Pressure	80–175 psi		80–160 psi		80–160 psi

## Function and Benefit Guide



- Digital display** provides weld process and parameters, fuel level, maintenance and machine use information.
- USB port** allows software updates from a USB drive. A summary file of recorded data from the unit will be saved to a USB drive that is inserted.
- Battery charge/crank assist receptacle.**
- Pushbutton main control knob** used for adjusting amperage/voltage and accessing the service menu.
- Standard 10-pin receptacle** for simple connection of spool guns. See page 7.
- Pushbuttons** used for selection of weld process, menu and other machine features.
- Engine control switch** is used to start the engine and then select between auto idle and high speed lock positions.
- Auto-Set™ button** provides process-specific pre-defined parameters.
- 120/240 V receptacle with circuit breaker.**  
(For matching plug, order **119172**.)
- 240 V receptacle with circuit breaker.**
- 120 V GFCI receptacles with circuit breaker.**

## Genuine Miller® Options

**Electric Fuel Pump 301741** Field  
Recommended for gas engine operations at altitudes above 5,000 feet. Improves engine starting and high-output performance.  
*Note: Factory-installed.*

**Spark Arrestor 300924** Field  
Mandatory when operating on California grasslands, brush or forest-covered land, and all national forests. For other areas, check your state and local laws.

**Cold Weather Kit 301747** Field  
Includes compressor oil sump and control block heaters.



**Air Cooler with Separator 301749**  
Cools and removes moisture from the air supply. *Designed for use above 32 degrees Fahrenheit (0°C). Bypass in colder temperatures.*

**Micron Filter Element 203877** Field  
Replacement micron filter for the Air Cooler with Separator.



**RTI Filter and Bracket 300491** Field  
Dryer will remove water, dirt and oil as small as one micron with 99.9 percent efficiency. Can be mounted on plasma cutter or on wall. Install as close as possible to point of air consumption.  
*Designed for use above 32 degrees Fahrenheit (0°C). Bypass in colder temperatures.*



Female Receptacle



**Full KVA Adapter Cord 300517** Field  
NEMA 14-50P to NEMA 6-50R. Adapts engine drive 120/240 V plug to common Millermatic® and Spectrum® 240 V plug.



**Full KVA Plug 119172** Field  
120/240 V, 50 A plug (NEMA 14-50P) to fit full KVA receptacle.

**Engine Tune-Up Kit 294669** Field. Kohler CH749  
Includes air and fuel filters, and two spark plugs.

**Air Compressor Tune-Up Kit 279120** Field  
Includes oil filter, air filter and oil separator.

## Genuine Miller® Accessories



**25-foot Battery Charge/Jump Cables with Plug 300422**



**Protective Cover 301730**  
Heavy-duty, water- and mildew-resistant covers protect and maintain the finish of the welder.

### MIG/Flux-cored Welding



**Millermatic® 142 907838**

See literature DC/12.41

**Millermatic® 211 907614**

See literature DC/12.58

The Millermatic line of MIG welders are complete arc welding power source, wire feeder and gun packages designed for portability and ease of use.

*Note: The Millermatic machines can be operated utilizing auxiliary power.*



**ArcReach® SuitCase® 8**

**951726001** With Bernard® BTB Gun 300 A

**951727** With Bernard® S-Gun™

**951728** With Bernard® Dura-Flux™ gun

**ArcReach® SuitCase® 12**

**951729001** With Bernard® BTB Gun 300 A

**951730** With Bernard® S-Gun™

**951731** With Bernard® Dura-Flux™ gun

Portable feeder designed to run off of arc voltage.

See literature M/6.55.

## Genuine Miller® Accessories (Continued)

### MIG/Flux-cored Welding (cont.)



**Spoolmatic® 30A Spool Gun 130831**  
Rated at 200 amps, 100 percent duty cycle with 30-foot (9 m) cable. See literature M/1.73.



**Spoolmate™ 200 Spool Gun 300497**  
Rated at 160 amps, 60 percent duty cycle with 20-foot (6 m) cable. See literature M/1.47.

### Stick (SMAW) Welding

#### Weld Leads

**2/0 Stick Cable Set, 50 ft. (15 m) 173851**  
Consists of 50-foot (15 m) 2/0 electrode cable with holder, and 50-foot (15 m) work cable with clamp. 350 A, 100% duty cycle.

**2/0 Stick Cable Set, 100/50 ft. (30.5/15 m) 043952**

Consists of 100-foot (30.5 m) 2/0 electrode cable with holder, and 50-foot (15 m) work cable with clamp. 300 A, 100% duty cycle.

### TIG (GTAW) Welding



**Dynasty® 210 Series**  
For portable AC/DC TIG.  
See literature AD/4.81.

### Multiprocess Welding



**Multimatic® 215 907693**  
Portable, all-in-one multiprocess package weighs only 38 pounds (17.2 kg), and features excellent arc characteristics. Exclusive multi-voltage plug (MVP™) provides flexibility to plug into 120- or 240-volt power. Take it anywhere you need to MIG, TIG or stick weld. See literature DC/12.59.

### Remote Solutions

**Remote Output Panel Kit 951850**  
If your engine-driven welder is mounted on a truck, easily locate the outputs at the point of use with the auxiliary power and weld output remote panel. See literature AY/20.5.

### Plasma Cutting



*Spectrum 375 X-TREME and 625 X-TREME shown.*

**Spectrum® 375 X-TREME™ 907529**  
See literature PC/9.2.

**Spectrum® 625 X-TREME™ 907579**  
See literature PC/9.6.

**Spectrum® 875 907583**  
See literature PC/9.8.

The Spectrum 375 X-TREME and 625 X-TREME come complete with protective X-CASE™ (not shown).

### Trailers and Hitches



**HWY-Mid Frame Trailer 301438**  
1,424-pound (646 kg) capacity highway trailer with welded steel tubing frame, heavy-duty axle with roller bearing hubs and leaf-spring suspension. Includes jack stand, fenders, lights, and dual hitch with 2-inch (50 mm) ball hitch and 3-inch (76 mm) lunette eye.  
*Note: Trailer is shipped unassembled.*



**Cable Tree 043826**  
Provides an area to conveniently wrap weld cables and extension cords.



**2-In-1 Document/ Fire Extinguisher Holder 301236**  
Stores documents and holds a five-pound fire extinguisher.  
*Note: Holder shown mounted on trailer. Fire extinguisher not included.*

## Ordering Information

Equipment and Options	Stock No.	Description	Qty.	Price
<b>Bobcat™ 265 Air Pak™</b> (Kohler engine)	<b>907876</b>	With battery charge/crank assist		
<b>Field Options</b> <i>Options listed below can be added to the above packages. Installation is required.</i>				
Electric Fuel Pump	<b>301741</b>	Recommended for gas engine operations at altitudes above 5,000 feet. <i>Factory-installed</i>		
Spark Arrestor	<b>300924</b>			
Cold Weather Kit	<b>301747</b>	Includes compressor oil sump and control block heaters		
Air Cooler with Separator	<b>301749</b>			
Micron Filter Element	<b>203877</b>	For use with air cooler with separator		
RTI Filter and Bracket	<b>300491</b>			
Full KVA Adapter Cord	<b>300517</b>			
Full KVA Plug	<b>119172</b>			
Engine Tune-Up Kit	<b>294669</b>	For Kohler CH749. Includes air and fuel filters, and two spark plugs		
Air Compressor Tune-Up Kit	<b>279120</b>	Includes oil filter, air filter and oil separator		
<b>Accessories</b>				
25-foot Battery Charge/Jump Cables w/Plug	<b>300422</b>			
Protective Cover	<b>301730</b>			
<b>MIG/Flux-cored Welding</b>				
Millermatic® Series MIG Welders		See page 6		
ArcReach® SuitCase® Wire Feeders		See page 6		
Spoolmatic® 30A Spool Gun	<b>130831</b>	See literature M/1.73		
Spoolmate™ 200 Spool Gun	<b>300497</b>	See literature M/1.47		
<b>Stick Welding</b>				
		See page 7		
<b>TIG Welding</b>				
		See page 7		
<b>Multiprocess Welding</b>				
		See page 7		
<b>Remote Solutions</b>				
		See page 7		
<b>Plasma Cutting</b>				
		See page 7		
<b>Trailers and Hitches</b>				
HWY-Mid Frame Trailer	<b>301438</b>	Trailer with lights, fenders and dual hitch. For highway use		
Cable Tree	<b>043826</b>	Trailer-mounted cable holder		
2-In-1 Document/Fire Extinguisher Holder	<b>301236</b>	Stores documents and holds a five-pound fire extinguisher		

Date:

Total Quoted Price:

Distributed by:

